



Section 4

Additional Information for Class 2 and 4 Drivers

Additional study of Section 2 of this manual and the *Driver's Handbook* is recommended.

Buses

Bus drivers require a Class 2 or higher class of driver's licence if the bus being operated has a seating capacity of over 24 occupants (including the driver) while carrying passengers. Passenger carrying vehicles with a seating capacity between 11 and 24 occupants (including the driver) require a Class 4 or higher class of driver's licence.

Passenger vehicles used for personal transportation by the owner or with the owner's permission require a Class 5 or higher class of driver's licence to operate.



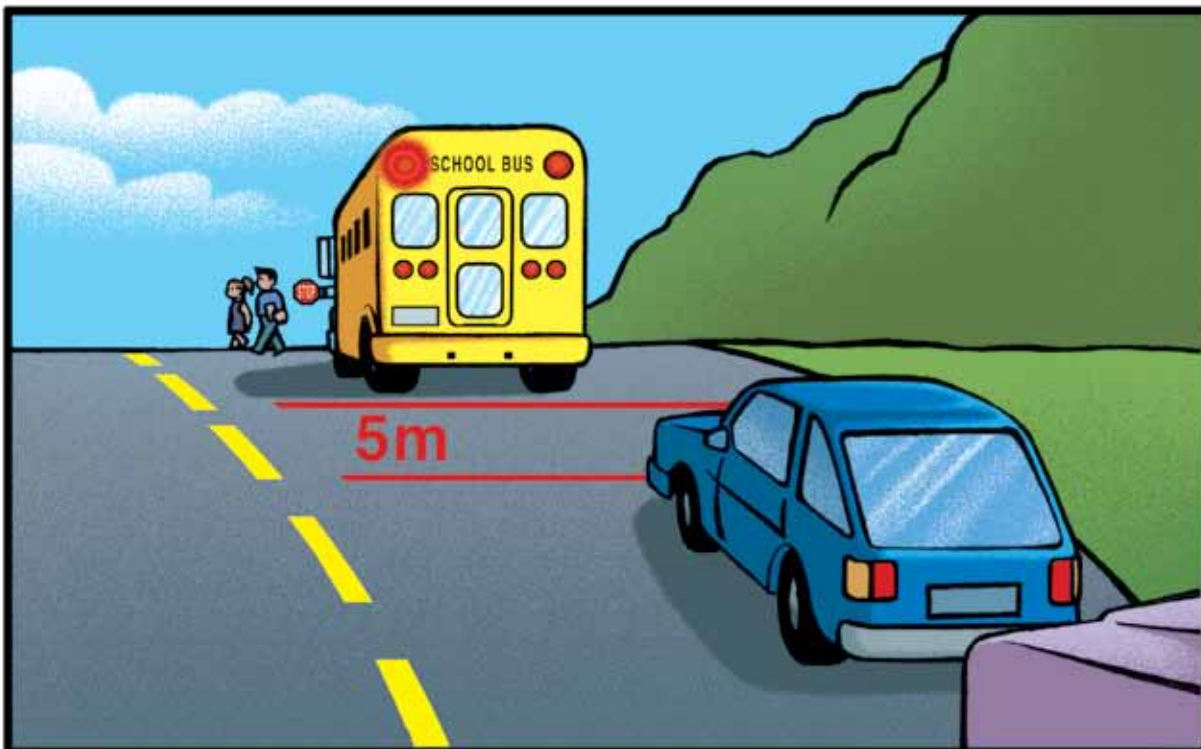
School Buses

School bus drivers require a Class 2 or higher class of driver's licence if the school bus being operated has a seating capacity of over 36 occupants (including the driver) while carrying passengers. School bus drivers require a Class 4 or higher driver's licence if the school bus being operated has a seating capacity between 11 and 36 occupants (including the driver) while carrying passengers.

Railway Crossings

When approaching railway tracks, operators of school buses shall bring the school bus to a full stop not closer than 5 m or more than 15 m measured from the front of the bus to the closest railway track. The bus must come to a full stop if it is carrying passengers or not. Once the school bus has stopped, the operator must fully open the service door, listen and look in both directions along the tracks for approaching trains, and not move the school bus unless it is safe to do so, closing the service door before moving the school bus.

A school bus certificate may be required to operate a school bus while carrying passengers.



For information regarding the operation of a school bus or information on school bus certificates, please refer to the *School Bus Driver's Handbook* or contact:

Education, Citizenship and Youth

Pupil Transportation

546 - 2nd Avenue

Rivers, Manitoba R0K 1X0

Telephone: 204-328-5402

or

Pupil Transportation Unit

507-1181 Portage Avenue

Winnipeg, Manitoba R3G 0T3

Telephone: 204-945-6900

Toll-free: 1-800-282-8069 Ext. 6900

Taxicab

Taxicab drivers require a Class 4 or a higher class of driver's licence. In addition, some cities or municipalities may have bylaws requiring taxi drivers to obtain a taxicab driver's permit or licence.



Emergency Vehicles

When responding to an emergency call emergency vehicle drivers can exceed the posted speed limits or proceed past a red traffic control signal light or stop sign. They must however sound audible signal bell or siren and show a flashing red or a combination of flashing red and blue lights.

Emergency vehicle drivers must drive with regard for safety, and must consider the:

- condition and use of the highway;
- amount of traffic that is on, or may be expected on the highway;
- nature and use being made of the emergency vehicle at the time.



Driving a Bus

Right Turns

In making a right turn, drivers must avoid running over or scuffing the curb with the rear wheels.

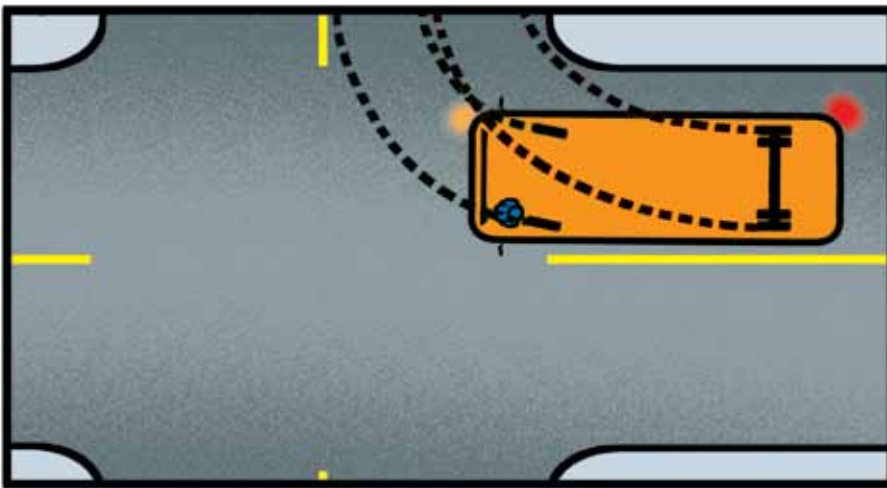
To execute a sharp right turn (particularly with a forward control bus) the driver should position the bus 1 to 2 m from the curb on the approach to the intersection then proceed straight, until the curb line of the side street can be sighted through the front entrance door. (As shown in the diagram).

Right turns into very narrow streets may require that the driver proceed well into the intersection before commencing the turn. It may be necessary to travel over the centre line as the turn is made. When this is necessary, the driver must use extreme caution to make sure a safe turn is made.

Left Turns

Turning a large vehicle requires more attention and care than turning a passenger car. All left turns with buses, as with other vehicles, must be started in the left lane as close to the centre line or median as possible. With the bus positioned approximately 1 m (3 ft) from the centre line or median, proceed straight until the intersecting curb line can be seen through the front left window. Complete the turn as near as possible into the left lane of the street you are entering. Narrow intersecting streets may require that you proceed straight ahead over the centre of the intersection before the turn can be started. When this is necessary, use caution.

Left turns from a one-way street into a one-way street will require the driver to adjust the turning arc in a similar manner as in the right hand turn to avoid running over or scuffing the curb with the left rear wheels. (For more information on turning, see Section 3.)



Leaving the Curb

The driver should not rely only on the side mirror to check that traffic is clear before pulling out, but should also glance over the left shoulder to verify the way is safe.

A turn signal light is required when a bus leaves the curb. The driver should not use the turn signal light until prepared to proceed from the curb.

Leaving the curb with a bus that has an overhang over the rear wheels, requires the driver to use caution to avoid striking pedestrians, poles or sign posts located close to the curb.

Cars parked close to the front of the bus and vehicles approaching in the opposite direction are factors which the driver must assess before moving the vehicle from the curb.

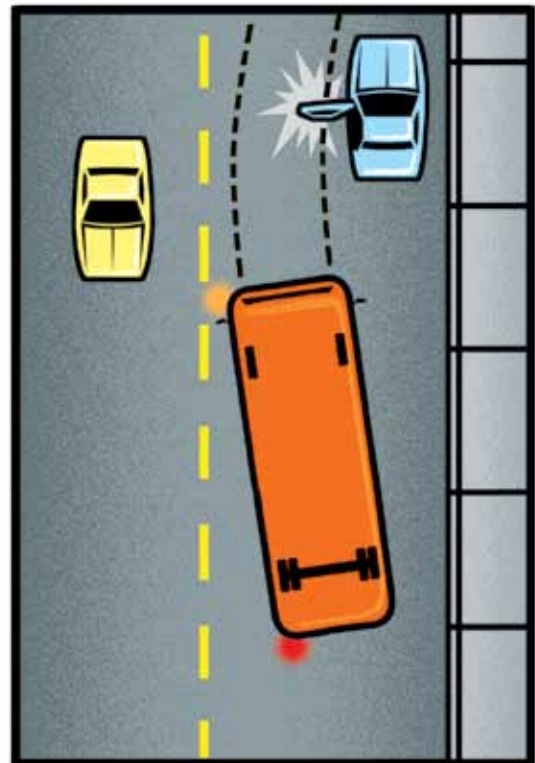


Parked Car Hazards

Passing parked cars requires the driver be constantly alert for hazards such as cars pulling out without warning, sudden opening of doors on the traffic side or pedestrians stepping out from between cars.

Watch for warning clues when passing a line of parked vehicles, such as:

- front wheels turned out;
- drivers sitting behind the wheel;
- exhaust from tail pipes;
- brake lights;
- signal lights.



Passenger Safety

The prime consideration of the driver is the safe operation of the vehicle.

This must take preference over maintaining schedules or any other factor that could contribute unsafe operation of the vehicle.

The driver operating a Class 2 or Class 4 vehicle must also consider of the comfort of passengers.

The operation of buses requires that the driver develop handling skills in accordance with the characteristics of the vehicle. A knowledge of the turning radius, amount of off-track of the rear wheels, overhang past the rear wheels and width of the vehicle, are important factors the driver must know for the skillful handling of the vehicle.

Many passenger accidents have been attributed to improper operation by the driver:

- stopping improperly at the loading zone;
- loading or unloading passengers when unsafe to do so;
- unnecessary sudden stops or starts with standing passengers;
- sharp turns at excessive speed;
- improper operation of bus doors.

Accidents of this type are preventable.

Inside Lights

A public passenger vehicle should have a light or lights inside the vehicle that will light up the whole of the interior of the vehicle. As well, public passenger vehicles should have a lamp at each entrance door to light the entrance or exit steps of the bus.

Cleanliness of Vehicles

A public passenger vehicle should be kept clean and sanitary at all times.

Vehicle Inspection

The Registrar may require the owner or operator of a commercial vehicle to have their vehicle inspected to make sure that it is in a safe condition and complies with *The Highway Traffic Act* and its Regulations.

Defects and Breakdowns

During a trip parts of a public passenger vehicle may become defective. If continuing the trip would endanger the safety or comfort of any passenger, the vehicle should be brought to a stop. It should not proceed with passengers until the defect is remedied or the danger is removed. If the vehicle is unable to proceed because of an accident or breakdown, the driver should make immediate arrangements to transport the passengers to their destination without delay.

Fuelling

A vehicle should not be refuelled while the engine is running or in the presence of any open flame. When the vehicle is being fuelled the nozzle of the fuel-hose must be kept in contact with the intake and be grounded to the fuel-tank throughout the fuelling process. The opening through which the tank of the passenger vehicle is filled must be outside the body of the vehicle and be ventilated.

Baggage

All baggage or property transported in, or on, any public passenger vehicle must be loaded so as not to interfere with the entrance or exit of passengers, must be stowed to prevent it from falling on, or against, any passenger.

Loading and Unloading Passengers



When loading or unloading passengers, the driver should make sure that it can be done safely. If possible when loading or unloading passengers outside of a city, the vehicle should be stopped clear of the travelled portion of the highway to allow the other vehicles to pass and be visible to approaching traffic.

Safety Provisions

A driver should not collect fares, make change, or load or unload passengers while the vehicle is in motion. Unnecessary conversation with passengers should not take place while the vehicle is being driven.

Driver's Vision

The driver's view ahead and to the right and left must not be obscured in any way. The driver must, at all times, have full movement of their arms and legs, and ready access to emergency equipment. No passenger may sit to the left of the driver. In the case of a sedan-type vehicle, a maximum of two passengers, in addition to the driver, may be seated on the front seat, and then only if there remains adequate room for the driver to operate the vehicle safely.

Standing Passengers

No passenger may stand in a position that could obstruct the driver's vision or movements.

Refusal to Transport Passengers

No person may be refused passage on a public passenger vehicle when they present themselves at any regular scheduled stopping-place and tender the regular fare, unless, at the time, the vehicle's seats are fully occupied. Persons may be refused passage if they are intoxicated, boisterous, disorderly, or using profane or obscene language.

Passengers with Disabilities

Persons with disabilities may require the assistance of a licensed animal. For example, a guide dog may accompany a visually impaired person onto a bus.

Test Yourself on Section Four

How well do you understand the information contained in Section 4? The answers to these questions are found in the preceding pages of this manual.

1. What is the first consideration of a driver who operates a vehicle used for the transportation of the public?
2. Is it important that the driver of a bus know the length, width, and wheel base of the vehicle?
3. What licences or permits is a taxi driver required to have?
4. What is the advantage of entering a sharp turn at a low speed?
5. If it is necessary to cross over a centre line or lane line to negotiate a sharp turn with a long wheel-base vehicle, what precautions should the driver take?
6. On a two-way street, in addition to checking the left side mirror, where should the driver of a vehicle look before leaving the curb?
7. What precautions must the driver of a bus take when leaving a parked position at which poles or sign posts are located near the vehicle?
8. Should the driver turn on the vehicle's turn signal lights before he is ready to leave the parking position?
9. What hazards should a driver expect when passing a line of parked vehicles?
10. What warning clues should the driver watch for when driving past a line of parked vehicles?
11. Under what conditions may the driver of an emergency vehicle exceed a posted speed limit?