

6. Backing Up

Before backing up, check for anyone or anything behind you, both by looking through your mirrors and over your shoulder. This includes checking carefully for children who may be too small to be in your direct line of vision. With your foot on the brake, put the vehicle in reverse. If you are reversing straight back or to the right, check your mirrors and look over your right shoulder; if reversing to the left, use your mirrors and look over your left shoulder. Take your foot off the brake and, if you're turning as you reverse, ensure that you don't strike anything to the sides.



Look over your left shoulder for a clear view when reversing to the left.



Look over your right shoulder when reversing straight or to the right.



Three Point Turn

A three point turn is when you:

1. Pull over to the right side of the street, stop, check mirrors and shoulder check.
2. Back up into an intersection or driveway. Check mirrors and shoulder check before backing up.
3. Turn left and proceed forward in the direction you came from.

Traffic Check

Before slowing down check traffic in front and behind you. Check your blind spot before pulling over to the right side of the road to stop.

Signal

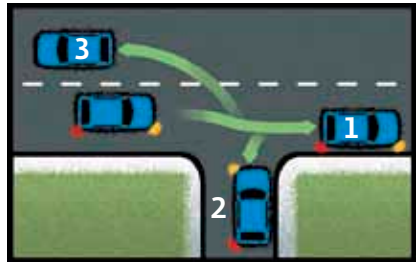
Turn on your right signal before slowing down unless there are vehicles waiting to enter the road from side roads or driveways between you and your stopping point. **(See diagram below.)** Wait until you have passed these entrances so that drivers will not think you are turning.

Speed

Gradually reduce speed. In a vehicle with a manual transmission, you may down shift into a lower gear as you slow down. Do not coast with your foot on the clutch pedal.

Position

Stop so you are parallel to the curb and not more than 45 centimeters away. **(Position 1)** Where there is no curb stop as far as possible off the travelled part of the road. Do not stop where you will block an entrance, an intersection or other traffic.



Traffic Check

Check your mirrors and shoulder check to the right before starting the turn. Wait until the way is clear. Each time you stop while turning, check traffic in both directions.

Signal

Turn your right signal or four-way flasher on.

Turn Around

With the steering wheel turned sharply right, reverse your vehicle slowly and smoothly, backing into the lane or driveway. **(Position 2)** Back up far enough so you can have a clear view of the roadway and are behind the sidewalk and stop. Turn your left signal on shifting to a forward gear, turn your steering wheel to the left and make sure that you check in both directions, then move your vehicle into the traffic lane. **(Position 3)**

Speed

Return to normal traffic speed by accelerating smoothly to blend with the traffic around you. In light traffic accelerate moderately. In heavier traffic you may have to accelerate more quickly. In a vehicle with a manual transmission shift gears as you increase your speed.

Three Point Turn Around on a Dead End Street

Traffic Check

Before slowing down, check traffic in front and behind you. Check your blind spot before pulling over to the right side of the road to stop.

Signal

Turn on your right signal before slowing down.

Speed

Gradually reduce speed. In a vehicle with a manual transmission, you may down shift into a lower gear as you slow down. Do not coast with your foot on the clutch pedal.

Position

Stop so you are parallel to the curb and not more than 45 centimeters away. Where there is no curb, stop as far as possible off the travelled part of the road. Do not stop where you will block an entrance, an intersection or other traffic. **(Position 1)**

Traffic Check

Check your mirrors and shoulder check to the left just before starting the turn. Wait until the way is clear. Check traffic in both directions as you proceed to make the turn. Each time you stop while turning, check traffic in both directions.

Signal

Turn on your left signal before starting to turn.

Turn Around

With the steering wheel turned sharply left, move slowly and smoothly across the road. When you have reached the far left side of the road, stop and put your vehicle in reverse. With the steering wheel turned sharply right, move in reverse so the vehicle is facing in the new direction. **(Position 2)** Stop and shift into forward gear to drive ahead. Use the whole road to make your turn, reversing only once. Do not reverse over the edge or shoulder of the road or onto the curb. **(Position 3)**

Speed

Return to normal traffic speed by accelerating smoothly to blend with the traffic around you. In light traffic accelerate moderately. In heavier traffic you may have to accelerate more quickly. In a vehicle with a manual transmission, shift gears as you increase your speed.

