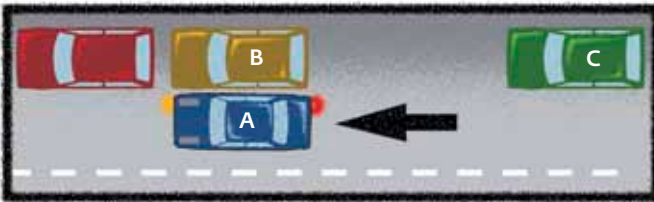


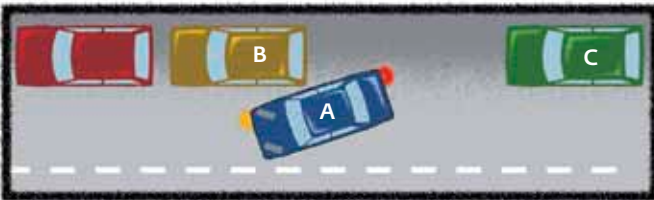
7. Parking

Parallel Parking

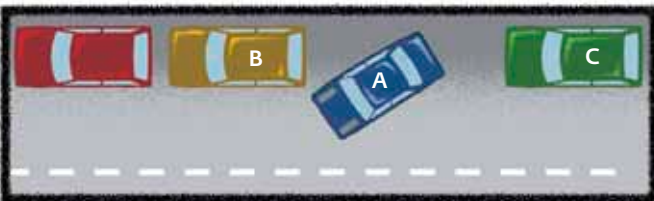
1. Check your mirrors for traffic. Don't stop suddenly if a car is close behind you. Signal your stop by flashing your brake lights approximately three times or by using a hand signal and then turn on your right signal. Drive alongside Car B about one metre away. Stop when your car's (Car A) rear bumper is even with the rear bumper of Car B.



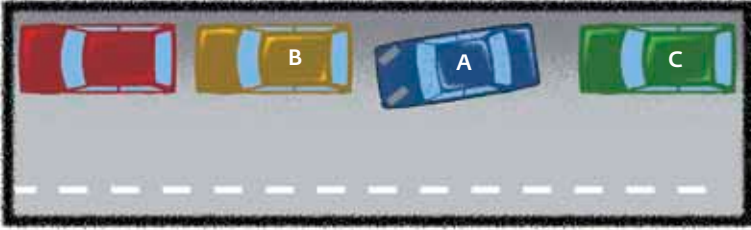
2. When you have checked your mirrors and blind spots and you are sure the way is clear, start backing into the space very slowly. As you reverse, you should steer sharply to the right until your car is at a 45 degree angle from the curb. Watch for vehicles passing you. Stop when your steering wheel is in line with the rear bumper of Car B.



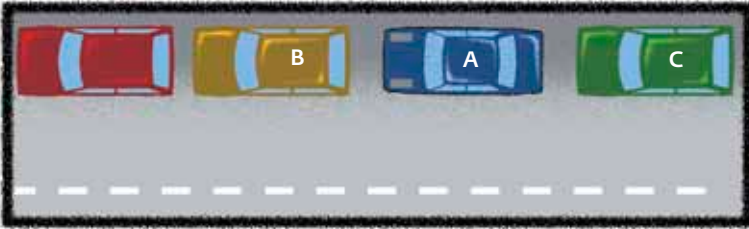
3. Straighten the wheels and continue to back into the space. The turn signal can be turned off. Stop when the right end of your front bumper is in line with and past the rear bumper of Car B.



4. Turn the steering wheel sharply to the left as you continue to back slowly. Make sure the front of your vehicle does not hit the parked vehicle ahead. Your right rear wheel should be close to the curb. Stop moving the car.



5. Put the car into forward gear. Turning the steering wheel to the right as you do so, drive slowly forward. This should bring your car parallel to and not more than 45 centimetres away from the curb. Stop the car when it is centred between Cars B and C.



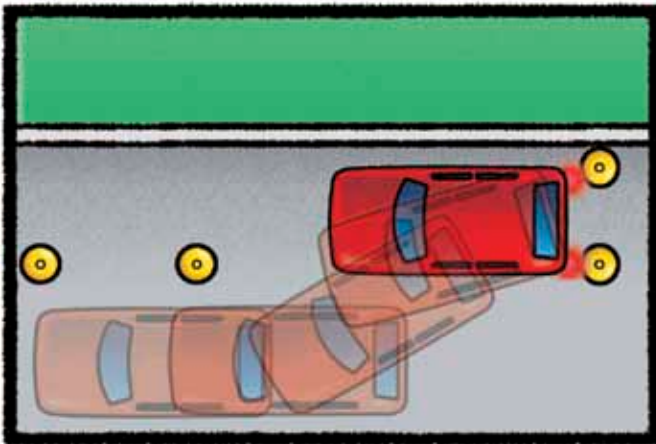
Backing Skill Test

During the road test, you will be required to demonstrate your ability to back up your vehicle. This will be done by successfully backing a vehicle within a space measuring approximately 1.85 metres by 7.5 metres as outlined by testing poles.

During the road test you will be asked to stop before the backing area to be given an explanation of the test. You will have three attempts to complete this portion of the test, each attempt consists of three movements of the vehicle (backwards, forward and then backward again).

At this point the vehicle must be parked satisfactorily. In this portion of the road test, the following actions will result in an automatic failure:

- The vehicle touches one of the poles.
- You drive over the curb (although your tires can touch the curb).
- You drive between the poles that represent the front or the back of a vehicle.
- You commit a dangerous act such as backing up or moving forward while a car is passing close by.



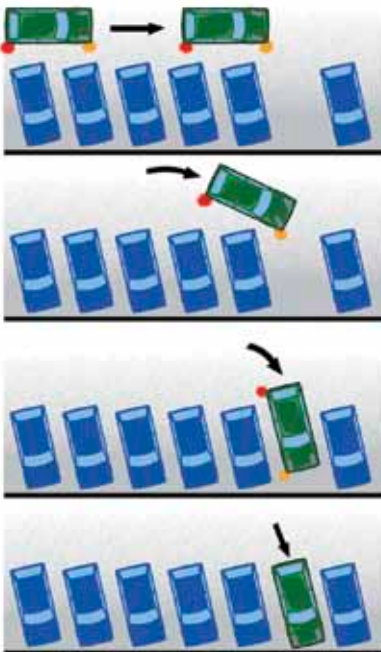
Angle Parking

This type of parking commonly occurs in parking lots, shopping centres and on very wide streets in some communities.

Steps in Angle Parking

1. Signal your intention to park and slow down.
2. Check for approaching traffic from the front and rear.
3. Approach the stall approximately a car width from the parked cars.
4. When your vehicle's front end is even with the rear of the stall you want to park in, begin steering sharply to the right while slowly driving towards the centre of the stall. Remember as you are turning into the stall, to check that you will not hit the vehicle on either side of the stall.
5. Once your car is centred in the stall, straighten your wheels and continue driving forward until you are completely in the parking stall.

Although it is easy to park, backing out from this position can be hazardous. Shoulder check sides and rear — don't just rely on your rearview mirror. Make sure it is clear behind and on both sides before backing up. If your vision is blocked, for example, by a truck parked beside you, move back cautiously and watch for pedestrians or vehicles that you may not have seen.



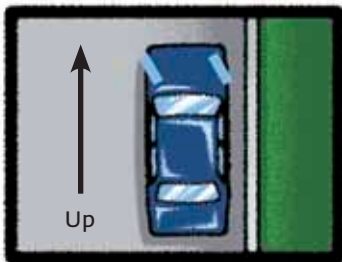
Parking on a Hill or Incline

Vehicles with automatic transmission should be placed in the “**park**” position. Vehicles with manual transmission should be placed in reverse or low gear. In both cases, **always set your parking brake firmly.**

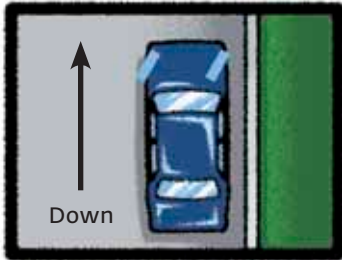
Uphill parking — turn the wheels **away from the curb.**

Downhill parking — turn the wheels **toward the curb** so the position of the wheel will help hold the car.

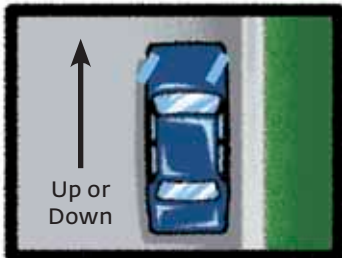
If there is no curb, whether you are parking up or downhill, turn wheels slightly to the right so that if the car begins rolling, it will move off the roadway.



Uphill with curb.
Turn wheels away from curb.



Downhill with curb.
Turn wheels towards the curb.



Without curb.
Turn wheels to the right.

Parking Pointers

- Always look for traffic including other vehicles or cyclists before opening a vehicle door.
- By law you may leave your vehicle unattended when the motor is running only for reasons such as warming the vehicle and defrosting the windshield. It is recommended that you have a spare key and you lock your door if you leave the vehicle. Utility and delivery service vehicles are exempt from this law.
- When leaving from a parked position, signal, and wait until it is safe before pulling out.

Illegal Parking

It is illegal to park:

- On a sidewalk.
- Across the entrance to any driveway, back lane or intersection.
- Within three metres from the point on the curb or edge of the roadway immediately opposite a fire hydrant.
- On a crosswalk or within three metres of a crosswalk.
- Within 15 metres of a pedestrian corridor.
- Within nine metres of a stop sign or other traffic sign or signal posted at an intersection.
- Within 30 metres of the nearest rail of a railway crossing, unless otherwise posted.
- Within six metres of a driveway entrance to a fire station, unless otherwise posted.
- On a roadway beside another vehicle that is already parked.
- At a curve on the highway outside a city, town or village, when the vehicle cannot be clearly seen from at least 60 metres in each direction upon the highway.
- In such a manner that it becomes a hazard or that is contrary to any section of *The Highway Traffic Act* or any municipal bylaw.